



Cantilever Load Cell

VLC-A106 / VLC-A106S

APPLICATIONS

- Tank weighing
- Hopper weighing
- Platform scales

STANDARD CAPACITY

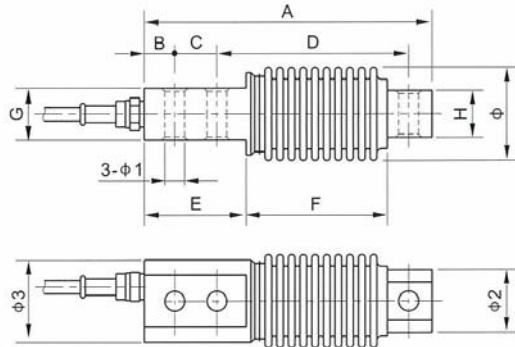
10, 20, 30, 50, 100, 200kg, 300-1000kg

WIRING

RED	Input (+)
BLACK	Input (-)
GREEN	Output (+)
WHITE	Output (-)

SPECIFICATIONS

Rated Output	2mV/V ± 0.1%
Non-Linearity	0.03% F.S.
Hysteresis	0.03% F.S.
Non-repeatability	0.02% F.S.
Creep (in 1 hr)	0.03% F.S.
Zero Balance	± 1%
Temp. effect span	15 PPM/°C
Temp. effect zero	26 PPM/°C
Operating Temp. range	- 20°C ~ + 60°C
Compensated Temp. range	- 10°C ~ + 40°C
Input resistance	385 ± 15Ω
Output resistance	350 ± 5Ω
Safe overload	150% F.S.
Ultimate overload	300% F.S.
Excitation voltage	10VDC/AC
Max. Excitation voltage	15VDC/AC
Insulation resistance	≥ 2000MΩ
Environmental protection	IP68
Material	Alloy tool steel (VLC-A106) Stainless steel (VLC-A106S)
Cable length	50FT



DIMENSION

Capacity Kg	Size mm											
	A	B	C	D	E	F	G	H	Φ	Φ1	Φ2	Φ3
10-200	4.84	0.51	0.71	3.23	1.81	2.28	0.87	0.79	1.61	0.33	1.02	1.38
300-1000	8.27	0.60	1.57	5.24	3.58	2.60	1.34	0.98	2.20	0.51	1.42	1.97



Virtual Measurements & Control Inc

Virtual Measurements & Control Inc

3196 Coffey Lane, Suite 604, Santa Rosa, CA95403

Tel: (707) 573 3111 Fax: (707) 573 3113

Virtual Measurements & Control (Asia) Pte Ltd

24 Hillview Terrace, Singapore 669 235

Tel: (65) 6762 5522 Fax: (65) 6763 6656

Dealer: